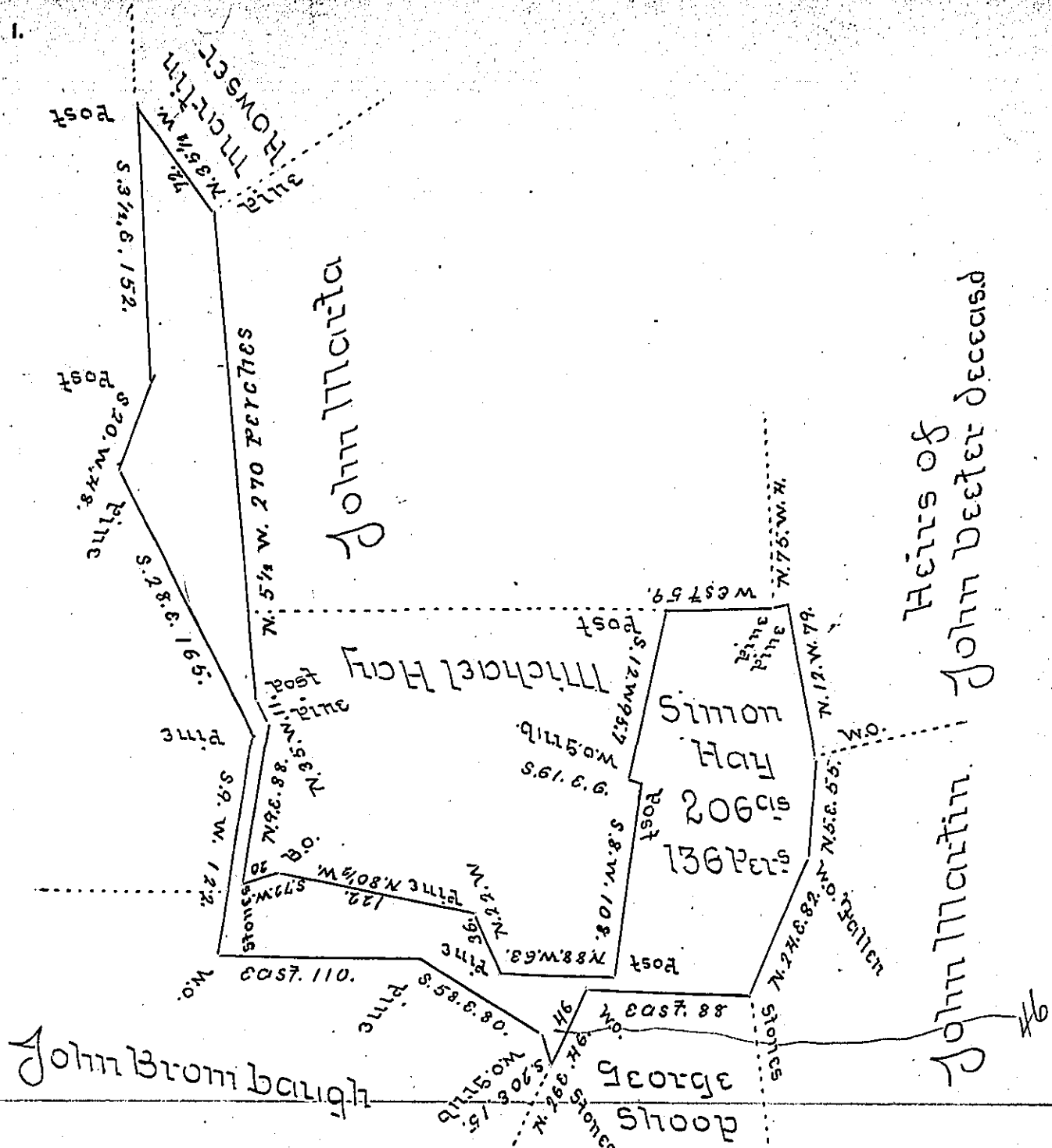


Morris's Survey



Situated in Woodberry Township Bedford County in
 Morris's Cove Containing 206^{as} 136 perches and the usual
 allowance for roads & surveyed for Simon Hay the 25^d
 day of November 1503 including an improvement in
 pursuance of a Warrant dated the 31st day of March 1797.
 To Samuel Cochran Esq^r William Piper Esq^r Sr
 Surveyor General

Note part of this survey is disputed by John Martin
 of Woodberry Township Bedford County by a Warrant
 in the Name of Jacob Nave Wm Piper

IN TESTIMONY that the above is a copy of the original remaining on file in
 the Department of Internal Affairs of Pennsylvania, made
 conformably to an Act of Assembly approved the 16th day of
 February, 1833, I have hereunto set my Hand and caused
 the Seal of said Department to be affixed at Harrisburg,
 this thirtieth day of May 1905.

Loose R. Brown
 Secretary of Internal Affairs.